

## Adoption Policy

To adopt a chinchilla from our organization, the Adopter must agree to our adoption policy:

- To care for the animal in a humane manner, providing adequate food, water, exercise and shelter in a healthy environment.
- To provide care, affection, and attention for the animal
- To promptly obtain veterinary care if the animal becomes sick or has an injury.
- To not allow the animal to be used for testing or laboratory purposes, pelted, or be used for vivisection or any other inhumane purposes
- To not abandon, sell, give away, dispose of, turn over to, or relinquish custody or possession of the animal except to return it to California Chins or with the approval of California Chins.
- To not use the animal for breeding.
- That the primary caregiver of the animal must be an adult not a child. Pets should not be used to teach responsibility to a child to the detriment of the health and well-being of the animal.
- The entire household is making a commitment to the chinchilla.

The Adopter must also acknowledge that:

- California Chinchillas cannot guarantee a chinchilla's compatibility with the Adopter, environment, supplies, or other animals.
- The actions of animals are often unpredictable and the possibility of bites, scratches, injury to the animal due to its environment, etc., exists.
- The animal is transferred to the Adopter "as is", and California Chinchillas is not responsible for any illness or injury that may exist at time of adoption or thereafter.

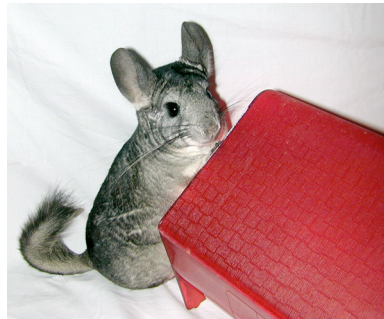
## About Us

California Chinchillas is a non-profit 501(c) (3) organization devoted to educating the public about chinchilla care and chinchilla rescue. Originally founded more than 10 years ago, the group has expanded its rescue efforts in recent years as the need for rehoming chinchillas as grown.

## For More Information

Check out our websites for more information on adopting a chinchilla. Our book, "The Joy of Chinchillas", written by the founders of California Chins, is a good resource for learning more about the care of chinchillas. Our websites have information on how you can get a copy of the book.

If you are interested in volunteering, making a donation to our organization, adopting, or you know of a chinchilla in need of a new home, please contact us.



Phone: 650-325-0295

Email: [adopt@chinchillarescue.org](mailto:adopt@chinchillarescue.org)

URL: [www.chinchillarescue.org](http://www.chinchillarescue.org)

# Chinchilla Rescue

## Adoption Information from California Chins Rescue





## About "Rescued" Chins

### HOW WE GET CHINCHILLAS

California Chins Rescue receives chinchillas from two primary sources - animal shelters and directly from the owner. Some chinchillas are big, beautiful, and healthy while some are small, scruffy and sickly. A majority of our chinchillas fall somewhere in between.

If you are looking for a cute, "perfect", healthy baby chinchilla that is white, black, violet, or a color other than gray, then adopting from a rescue is probably not the first source to consider. It is rare for us to have a chinchilla available for adoption that is under a year in age. It is also unusual to have a healthy chinchilla that is a color other than standard gray available. It is important to decide what you are looking for when considering chinchilla adoption/purchase. If you truly want to give a forever home to a "homeless" animal that may have had a rough start in life, then adopting from a rescue group is the right choice.

### BENEFITS OF ADOPTING A RESCUED ANIMAL

- Adopting a companion for yourself or another chinchilla
- Making room for another animal in a shelter or rescue.
- Having the gratification of knowing you have saved a chinchilla from an unknown fate.



## Adoption

### ADOPTION PROCESS

Our goal is to place our chinchillas in happy loving homes to live out their lives as cherished members of a family. We do our best to make the most appropriate matches for both human and chinchilla. We will not adopt chinchillas to young people unless the whole family is committed to providing a forever home.

*Note: We reserve the right to refuse to adopt a chinchilla to anyone for any reason without explanation.*

The first step is to contact our group to arrange a time to come visit our foster homes in the San Francisco Bay Area and meet the chinchillas that are available for adoption. If you are looking for a companion for an existing chinchilla member if your family, we recommend bringing the chinchilla with you. Since we do not condone breeding of our chinchillas, we will not pair animals of the opposite sex unless one has been neutered.

### VISITING WITH US

When you come to visit one of our foster homes, plan on spending at least 2 hours with us. During that time you will get to meet and handle a number of chinchillas while we provide information about the care of chinchillas. We sometimes refer to the training as "Chin 101". This information includes basic health checks, feeding, grooming, housing, etc.

If you are hoping to go home with a new addition to your family, please bring a small travel carrier, like those for cats, to transport your chin safely.

### ADOPTION COSTS

When you are ready to adopt, we do not have a set adoption fee, but ask for a donation towards our expenses. The suggested donation is \$50 (or more) per animal. If you need a cage for your new chinchilla, we often have refurbished cages available for a small donation.



## Supplies

### WHAT YOU WILL GO HOME WITH:

- a wonderful chinchilla
- a 5 pound bag food.
- a bag of dust
- a bag of Timothy hay
- a chew toy
- "The Joy of Chinchillas" book (\$20 value)

### WHAT ELSE YOU WILL NEED:

Cage	A minimum of 3 cubic feet of cage space per animal. Chins like to climb and jump, so taller cages are better than long, short cages.
Bedding	Kiln-dried pine shavings, clean oat, wheat, or rice straw, ground corn cob, or newspaper
House	Chins like a cozy place to hide and sleep. Options include a cardboard box (without tape, plastic, etc), a PVC pipe 4-6" in diameter, or kiln-dried pine box.
Water Bottle	Good water bottles are available at any pet store.
Food Bowl	A dish that is heavy with a broad base or one that clamps to the side of the cage are good choices.
Dust Bath	A container, such as a stainless steel, or ceramic bowl; a large glass or plastic jar (one gallon or larger), a hard plastic tub, or a large flowerpot base. A large glass fish bowl.
Source of Exercise	Options include: a 15" solid surface exercise wheel, or flying saucer for inside the cage, or a large plastic exercise ball for running around the house. If your chinchilla gets plenty of time to run outside of its cage, a wheel is not necessary.